

## Fibre-Metal® is your competitive edge.

**Safety. Comfort. Efficiency.**  
We deliver all that – and more.

Our hard hats, welding helmets and faceshields are engineered to offer maximum safety and productivity. They're designed to deliver unmatched comfort and fit, so you can concentrate better and stay on the job longer. And with our various **QuickSwitch™ System** options, switching between tasks like welding and grinding is fast and easy — meaning you get the highest possible levels of productivity.

- **Safety first.** Personal protective equipment reduces injuries on the job.
- **Comfort counts.** Except for safety, nothing beats the all-day comfort and fit of Fibre-Metal®.
- **Productivity is built in.** Our **QuickSwitch™ System** minimizes downtime between tasks.

Don't compromise on protection, comfort and performance. Choose Fibre-Metal®.



by Honeywell

[www.fibre-metal.com](http://www.fibre-metal.com)

## ! Introducing the QuickSwitch™ System



by Honeywell

[www.fibre-metal.com](http://www.fibre-metal.com)



## Three ways to add or switch face protection in seconds.



1

### Speedy-Loop™

- ideal for frequent on/off use with protective caps
- fully adjustable to fit any style of cap
- secure brim tab design contains no metal parts
- does not affect the dielectric rating of the caps



2

### Quick-Lok™

- mounting blocks attach to cap
- ideal for secure, long term combination use
- cups attach to welding masks, faceshields, goggles
- switching accessories requires no tools and can be done in seconds



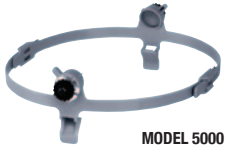
3

### Quick-Lok™ Mounting Blades

- fit many brands of slotted caps
- easy to insert and detach from cap
- Quick-Lok™ Mounting Blades enables the Quick-Lok™ mounting system to be used on slotted caps

## Choose the QuickSwitch™ System that's best for you.

### Speedy-Loop™



MODEL 5000

Ideal for frequent on/off use with protective caps. Welding helmets, faceshields and goggles can be easily mounted while the cap is on the head. No tools or cap modifications are required.



### Fibre-Metal® Faceshield & Cap Combo



**SUPEREIGHT TYPE 1 HARD HATS\***  
E2RW03A000  
**7" FACESHIELD CROWN  
W/SPEEDY-LOOP™**  
F5500  
**CLEAR WINDOW 9.75" X 19"**  
4199CL



**ROUGHNECK TYPE 1 HARD HATS\***  
P2HNSW01A000  
**4" DUAL CROWN FACESHIELD  
W/SPEEDY-LOOP™**  
FM5400DCCLC



**SENSOR TYPE 2 HARD HAT\***  
SE215A000  
**4" FACESHIELD CROWN  
W/SPEEDY-LOOP™**  
F5400  
**CLEAR WINDOW 8" X 16.5"**  
4178CL

### Fibre-Metal® Welding Helmet & Cap Combo



**SUPEREIGHT TYPE 1 HARD HATS\***  
E2RW03A000  
**TIGERHOOD FUTURA ADF  
WELDING HELMET SEL SHADE 9-13  
ADC W/SPEEDY-LOOP™**  
52999BVADCSR



**ROUGHNECK TYPE 1 HARD HATS\***  
P2HNRW01A000  
**TIGERHOOD CLASSIC  
2" X 4-1/4" FLIP FRONT  
W/SPEEDY-LOOP™**  
5906BE

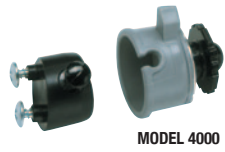


**SENSOR TYPE 2 HARD HAT\***  
SE215A000  
**TIGERHOOD CLASSIC WIDE VISION  
4-1/2" X 5-1/4" W/SPEEDY-LOOP™**  
5990GY



**SUPEREIGHT TYPE 1 HARD HAT**  
E2SW01A000  
**SOLOGOGGLES  
W/SPEEDY-LOOP™**  
F5055SH5

### Quick-Lok™



MODEL 4000

Ideal for secure, long-term combination use. Quick-Lok™ mounting blocks are screwed onto the protective cap. Welding helmets, faceshields, and goggles equipped with Quick-Lok™ cups can be securely mounted onto and removed from the cap – without tools.



**SUPEREIGHT TYPE 1 HARD HAT\***  
**W/QUICK-LOK™ BLOCKS**  
E2QSW02A000  
**7" FACESHIELD CROWN  
W/QUICK-LOK™ CUPS**  
F4500  
**CLEAR WINDOW 9.75" X 19"**  
4199CL



**ROUGHNECK TYPE 1 HARD HAT\***  
**W/QUICK-LOK™ BLOCKS**  
P2HNSW74A000  
**4" DUAL CROWN FACESHIELD  
W/QUICK-LOK™ CUPS**  
FM4400DCCLC



**ROUGHNECK TYPE 1 HARD HAT\***  
**W/QUICK-LOK™ BLOCKS**  
P2HNSW01A000  
**4" FACESHIELD CROWN  
W/QUICK-LOK™ CUPS**  
F4400  
**IR/UV SHADE 5 WINDOW  
9.75" X 19"**  
4199IR/UV5



**ROUGHNECK TYPE 1 HARD HAT\***  
**W/QUICK-LOK™ BLOCKS**  
P2HNSW02A000  
**TIGERHOOD CLASSIC ADF WELDING  
HELMET SEL SHADE 9-13 ADC  
W/QUICK-LOK™ CUPS**  
4999BV913DS



**SUPEREIGHT TYPE 1 HARD HATS\***  
**W/QUICK-LOK™ BLOCKS**  
E2QRW03A000  
**TIGERHOOD FUTURA WIDE VISION  
5-1/4" X 4-1/2" WELDING HELMET  
W/QUICK-LOK™ CUPS**  
4209OSR



**SENSOR TYPE 2 HARD HAT\***  
**W/QUICK-LOK™ BLOCKS**  
SE2Q01A000  
**TIGERHOOD CLASSIC 2" X 4-1/4"  
FLIP FRONT W/QUICK-LOK™ CUPS**  
4906GY



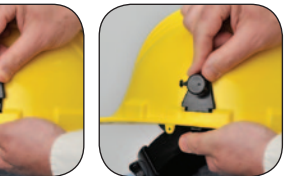
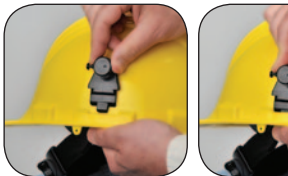
**ROUGHNECK TYPE 1 HARD HAT  
W/QUICK-LOK™ BLOCKS**  
P2HNRW74A000  
**SOLOGOGGLES**  
F4055SH5

### Quick-Lok™ Mounting Blades



MODEL 6000

Adapts most popular brands of slotted caps to the Quick-Lok™ Mounting System in seconds – without tools.



**NORTH TYPE 1 SLOTTED CAP**  
A79R010000  
**7" FACESHIELD CROWN  
W/QUICK-LOK™ BLADES**  
F6500  
**CLEAR WINDOW 9.75" X 19"**  
4199CL



**NORTH TYPE 1 SLOTTED CAP**  
A79R070000  
**4" DUAL CROWN FACESHIELD  
W/QUICK-LOK™  
W/QUICK-LOK™ BLADES**  
FM4400DCCLC  
6000



**NORTH TYPE 1 SLOTTED CAP**  
A79R020000  
**4" FACESHIELD CROWN  
W/QUICK-LOK™ BLADES**  
F6400  
**CLEAR WINDOW 8" X 16.5"**  
4178CL



**NORTH TYPE 1 SLOTTED CAP**  
A79R070000  
**TIGERHOOD FUTURA ADF WELDING  
HELMET SEL SHADE 9-13  
W/QUICK-LOK™ BLADES**  
62999BV913SR



**NORTH TYPE 1 SLOTTED CAP**  
A79R010000  
**TIGERHOOD CLASSIC  
2" X 4-1/4" FLIP FRONT  
W/QUICK-LOK™ BLADES**  
6906GY



**NORTH TYPE 1 SLOTTED CAP**  
A79R020000  
**TIGERHOOD FUTURA  
2" X 4-1/2" FLIP FRONT  
WELDING HELMET  
W/QUICK-LOK™ BLADES**  
62006BK



**NORTH TYPE 1 SLOTTED CAP**  
A79R020000  
**SOLOGOGGLES  
W/QUICK-LOK™ BLADES**  
F6055SH5



\* Features Slip-Proof, Strip-Proof Ratchet, limited warranty for life of hard hat.