

Arc Gouging Torches / Carbons

Arc Gouging Torches

Best Welds® torches will groove, bevel, cut, gouge, pierce or flush away any kind of metal. The Best Welds® torch saves time, costs less to use and gives a better finished job than older methods such as grinding, chipping, etc.

GT4000

- Heavy duty yet light weight.
- 1000 AMP maximum.
- Accepts pointed carbons to 1/2".
- Accepts flat carbons up to 5/8".



Gouge torch with 7' cable
Part No. GT61-082-008

Gouge torch with 10' cable
Part No. GT61-082-009

Gouge torch only
Part No. GT01-082-002

Model H3

General purpose gouge torch.
Part No. 61-062-016X



Model K3

The K3 is a medium-duty torch. This torch is built for repair and maintenance jobs in areas such as mining, construction and all types of metal fabrication.

Part No. 61-064-009X



GT4000 Replacement Parts

All parts are interchangeable with other industry-leading gouging torches.



No.	Part No.	Description
1	GT94-476-066	Lever assembly w/screw
2	GT94-800-077	Spring
3	GT94-433-183	Insulator assembly w/screw
4	GT94-370-163	Handle
5	GT94-103-206	Torch body
6	GT94-632-094	Hinge pin
7	GT94-048-088	Upper arm
8	GT94-378-368	Head w/screw
9	GT94-170-150	Air/power connector
10	GT94-105-014	Insulating boot
11	GT94-104-016	Valve with bonnet
12	GT94-801-011	Valve with o-rings
NS	GT94-710-036	O-rings only
13	GT94-104-012	Bonnet
14	GT70-084-207	Power cable 7'
14	GT70-084-210	Power cable 10'

Carbon Arc Gouging Electrodes

- Designed specifically for the air carbon arc metal removal process.
- Highly resistant to breakage, heat and oxidation.
- Excellent for fast-cutting of carbon and ductile irons, aluminum, copper and other high strength and high alloys.
- Broad range of cutting applications:
 - Machining grooves for weld-joint preparation.
 - Removing hard surface metal to facilitate repair.
 - Cutting non-ferrous and other hard-to-cut metals.
 - Used in industries such as metal fabrication, foundries, ship building, construction, machine shops, transportation, salvage yards, general maintenance, etc.

Copper-Coated Jointed Gouging Carbons



Part No.	Size		Qty/Box
	Inches	mm	
24-064-003X	3/8 x 17	9.5 x 430	100
24-084-003X	1/2 x 17	13.0 x 430	100
24-104-003X	5/8 x 17	16.0 x 430	100
24-124-003X	3/4 x 17	19.0 x 430	100

DC Copperclad Electrodes

- Superior Metal Removal Rate.
- Clean Cuts.
- Cooler Operation.
- Uniform Diameter.
- Excellent Arc Stability.

Copper-Coated Pointed Gouging Carbons

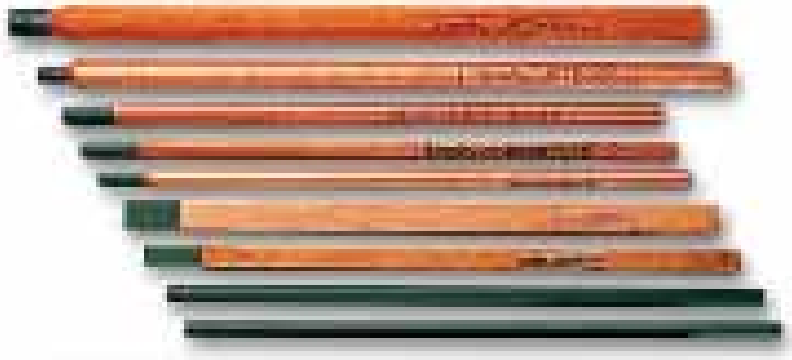


Part No.	Size		Qty/Box
	Inches	mm	
22-023-003X	1/8 x 12	3.2 x 305	100
22-983-003X	5/32 x 12	4.0 x 305	50
22-033-003X	3/16 x 12	5.0 x 305	50
22-043-003X	1/4 x 12	6.5 x 305	50
22-053-003X	5/16 x 12	8.0 x 305	50
22-063-003X	3/8 x 12	9.5 x 305	50
22-082-003X	1/2 x 14	13.0 x 355	50

Gouging Electrodes

Gouging Electrodes

- Excellent arc stability.
- Superior metal removal rate.
- Cool operation.
- Uniform diameter.
- Clean machine-like grooves and cuts.



Current Requirements

Carbon Diameter	1/8" 3mm	5/32" 4mm	3/16" 5mm	1/4" 6mm	5/16" 8mm	3/8" 10mm	1/2" 13mm	5/8" 16mm
Min. Amps	60	90	200	300	350	450	800	1000
Max. Amps	90	150	250	400	4550	600	1000	1250

DC Jetrod® Copperclad Jointed Electrodes

Eliminates stub loss and provides continuous electrode feed especially for semi-automatic and automatic torches. Machined at each end to provide male and female fittings.

Part No.	Electrode Size		
	Inches	mm	Box
24-052-003	5/16 x 14	7.9 x 356	100
24-062-003	3/8 x 14	9.5 x 356	100
24-082-003	1/2 x 14	12.7 x 356	100
24-064-003	3/8 x 17	9.5 x 432	100
24-084-003	1/2 x 17	12.7 x 432	100
24-104-003	5/8 x 17	15.9 x 432	100
24-124-003	3/4 x 17	19.1 x 432	100

AC Copperclad Pointed Electrodes

Designed for use with AC power supplies. Rare earth material is added to stabilize the arc, improving the operating characteristics.

Part No.	Electrode Size		
	Inches	mm	Box
20-033-003	3/16 x 12	4.8 x 305	50
20-043-003	1/4 x 12	6.4 x 305	50
20-063-003	3/8 x 12	9.5 x 305	50

DC Copperclad Flat Electrodes

Specially designed for close tolerance metal removal. Excellent for removing weld crowns, repairing or making dies, removing welded dogs and scarfing billets.

Part No.	Electrode Size		
	Inches	mm	Box
35-099-003	3/8 x 5/32 x 12	9.5 x 4.0 x 305	50
35-033-003	5/8 x 3/16 x 12	15.9 x 4.8 x 305	50

DC Copperclad Pointed Electrodes

A standard all purpose gouging electrode. Controlled copper coating improves conductivity providing more efficient, cooler operation and helps maintain electrode diameter at the point of the arc.

Part No.	Electrode Size		
	Inches	mm	Box
22-023-003	1/8 x 12	3.2 x 305	100
22-983-003	5/32 x 12	4.0 x 305	50
22-033-003	3/16 x 12	4.8 x 305	50
22-043-003	1/4 x 12	6.4 x 305	50
22-053-003	5/16 x 12	7.9 x 305	50
22-063-003	3/8 x 12	9.5 x 305	50
22-082-003	1/2 x 14	12.7 x 356	50

DC Plain Pointed Electrodes

General purpose electrodes without the copper coating. Used on applications where copper is considered detrimental.

Part No.	Electrode Size		
	Inches	mm	Box
21-983-003	5/32 x 12	4.0 x 305	50
21-033-003	3/16 x 12	4.8 x 305	50
21-043-003	1/4 x 12	6.4 x 305	50
21-053-003	5/16 x 12	7.9 x 305	50
21-063-003	3/8 x 12	9.5 x 305	50
21-083-003	1/2 x 12	12.7 x 305	100

Cutskill® Air Carbon-Arc

DC Copperclad Pointed Electrodes

A standard all purpose gouging electrode. Controlled copper coating improves conductivity providing more efficient, cooler operation and helps maintain electrode diameter at the point of the arc.

Part No.	Electrode Size		
	Inches	mm	Box
22-023-003C	1/8 x 12	3.2 x 305	100
22-983-003C	5/32 x 12	4.0 x 305	50
22-033-003C	3/16 x 12	4.8 x 305	50
22-043-003C	1/4 x 12	6.4 x 305	50
22-053-003C	5/16 x 12	7.9 x 305	50
22-063-003C	3/8 x 12	9.5 x 305	50
22-082-003C	1/2 x 14	12.7 x 356	50

Electrodes / Angle Arc[®] Torches

Cutskill[®] Air Carbon-Arc DC Copperclad Jointed Electrodes

Provides continuous electrode feed for greatly increased savings, especially in production operations.

Part No.	Electrode Size		
	Inches	mm	Box
24-064-003C	3/8 x 17	9.5 x 432	100
24-084-003C	1/2 x 17	12.7 x 432	100
24-104-003C	5/8 x 17	15.9 x 432	100
24-124-003C	3/4 x 17	19.5 x 432	100
24-164-003C	1 x 17	25.4 x 432	100

Cutskill[®] Air Carbon-Arc DC Copperclad Hollow Pointed Electrodes

General purpose electrodes having the same high quality blend of carbon and graphite used in other electrodes, but with a hole down the center of the electrode.

Part No.	Electrode Size		
	Inches	mm	Box
22-033-003HC	3/16 x 12	4.8 x 305	50
22-043-003HC	1/4 x 12	6.4 x 305	50
22-053-003HC	5/16 x 12	7.9 x 305	50
22-063-003HC	3/8 x 12	9.5 x 305	50
22-082-003HC	1/2 x 12	12.7 x 305	50

Angle-Arc[®] Manual Gouging Torches

Arcair Angle-Arc[®] torches are highly efficient metal removal tools for fabrication jobs in steel fabrication plants, shipyards, railroads, farms... anywhere people want to save time and money. They speed up weld removal, backgouging, edge preparation, defect repair and many other metal removal jobs. They are ideal for almost all metals with little or no deformation, because the heat input is so low.



Now a complete family of Angle-Arc[®] Torches to meet your everyday needs. Just pick the best torch that fits your gouging applications.

- **Natural 15° Torch Angle**- Greater operator comfort.
- **360° Swivel Cable**- Less cable twist and strain on operator.
- **Positive Grip Handle**- Greater operator feel and ease in positioning the torch.
- **Reduced Weight**- Optimum cable and torch weight to minimize fatigue.
- **High Quality Cable Hose**- Best quality cable hose offers high heat and abrasion resistance.
- **Rugged Construction**- Overall rugged construction for the harsh environment.



Part No. K2000



Part No. K3000



Part No. K4000

Model	Description	Accepts		Maximum AMPS	Compressed Air		
		Round Carbon	Flat Carbon		Pressure PSI	Flow Rate CFM	Torch & Cable Weight
K2000	Light duty	1/8" (3mm) to 1/4" (6mm)	3/8" (10mm)	450	40 (2.8kg/cm ²)	8 (0.23m ³ /min)	3.6 lbs. (1.6kg)
K3000	Medium duty	1/8" (3mm) to 3/8" (10mm)	3/8" (10mm) 5/8" (16mm)	600	80 (5.6kg/cm ²)	21 (0.60m ³ /min)	4.0 lbs. (1.8kg)
K4000	Heavy duty	5/32" (4mm) to 1/2" (13mm)	3/8" (10mm) 5/8" (16mm)	1000	80 (5.6kg/cm ²)	28 (0.79m ³ /min)	5.4 lbs. (2.4kg)

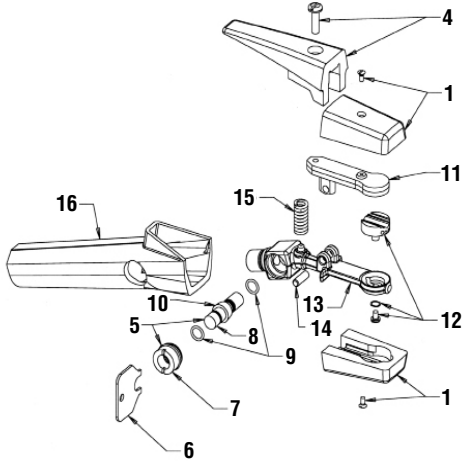
Ordering Information

Model	Torch Only	Torch w/ 7 ft. Cable	Torch w/ 7 ft. Cable & Insulated Hook-Up Kit	Torch w/ 10 ft. Cable	Torch w/ 10 ft. Cable & Insulated Hook-Up Kit
K2000	01-046-001	61-046-006	61-046-002	61-046-007	61-046-003
K3000	01-065-001	61-065-006	61-065-002	61-065-007	61-065-003
K4000	01-082-002	61-082-008	61-082-006	61-082-009	61-082-007

Angle-Arc® Manual Gouging Torch Parts

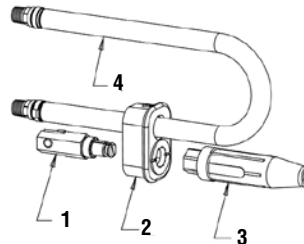
Torch Assembly Replacement Parts

K2000, K3000 and K4000 Torch (K4000 Shown)



Item	Description	K2000	K3000	K4000
	Complete torch	01-046-001	01-065-001	01-082-002
1	Insulators and screws	94-433-193	94-433-193	94-433-183
4	Lever and screw	94-476-080	94-476-080	94-476-066
5	Valve bonnet	94-104-016	94-104-016	94-104-016
6	Bonnet wrench	94-960-001	94-960-001	94-960-001
7	Bonnet only	94-104-012	94-104-012	94-104-012
8	Spool and O-rings	94-801-011	94-801-011	94-801-011
9	O-ring (2 required)	94-710-036	94-710-036	94-710-036
10	Spool only	94-801-010	94-801-010	94-801-010
11	Upper arm	94-048-119	94-048-120	94-048-088
12	Head and screw	94-378-364	94-378-366	94-378-368
13	Torch body	94-103-233	94-103-232	94-103-206
14	Hinge pin	94-632-100	94-632-101	94-632-094
15	Spring	94-800-191	94-800-191	94-800-077
16	Handle	94-370-179	94-370-179	94-370-163

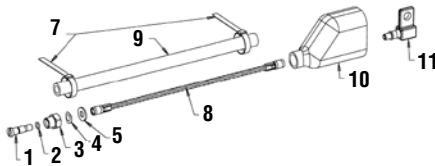
Hook-Up Kit & Parts



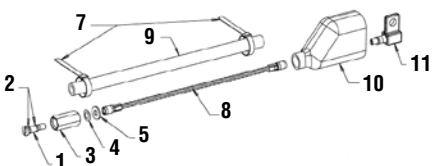
Item	Description	Part No.
	Complete hook-up kit	94-463-045
1	Male gouging connector	94-170-181
2	Cable boot cap	94-105-026
3	4-WPC-R connector	4-WPC-R
4	Pigtail air supply hose 3/8 NPTM ends	94-396-205

Cable Assembly Replacement Parts

K2000 & K3000 Cable



K4000 Cable



Item	Description	K2000	K3000	K4000
	7' (2.1m) cable assembly	70-088-107	70-088-107	70-084-207
	10' (3m) cable assembly	70-088-110	70-088-110	70-084-210
1	Retainer screw	94-695-054	94-695-054	94-170-182*
2	O-ring	94-710-027	94-710-027	
3	Connector	94-170-178	94-170-178	
4	Spring washer	94-940-104	94-940-104	94-940-104
5	Flat washer	94-940-103	94-940-103	94-940-103
7	Clamp (2 required)	98-167-010	98-167-010	98-167-010
8	7' (2.1m) conductor	96-130-314	96-130-314	96-130-263
8	10' (3m) conductor	96-130-315	96-130-315	96-130-261
9	7' (2.1m) cover	94-171-273	94-171-273	94-171-273
9	10' (3m) cover	94-171-274	94-171-274	94-171-274
10	Insulating boot	94-105-014	94-105-014	94-105-014
11	Female connector 3/8 NPTF	94-170-150	94-170-150	94-170-150

* Includes Retainer Screw, O-Ring, and Connector

K3 / K5 Torches

Straight Handle Manual Gouging Torches

The K-3 and K-5 are just two torches in a line of gouging and cutting equipment that delivers rugged reliability. The addition of superb support and complete technical backup makes Arcair the number one name in air carbon arc manual torches.

The K-Model Manual Torches are an essential part of the money-saving air carbon arc metal removal process, which melts metal with an electric arc, then blows it away with a jet of ordinary shop compressed air.

These torches are highly efficient metal removal tools for fabrication jobs in steel fabrication plants, shipyards, railroads, farms, anywhere people want to save time and money. They speed up weld removal, backgouging, edge preparation, defect repair and many other metal removal jobs. They are ideal for almost all metals – with little or no deformation – because the heat input is so low.

- **Reliable Torch Design**
- **360° Swivel Cable**- Less cable twist and strain on operator.
- **Positive Grip Handle**- Greater operator feel and ease in positioning the torch.
- **Reduced Weight**- Optimum cable and torch weight to minimize fatigue.
- **High Quality Cable Hose**- Best quality cable hose offers high heat and abrasion resistance.
- **Rugged Construction**- Overall rugged construction for the harsh environment.



Part No. K-3



Part No. K-5

Model	Description	Accepts		Maximum AMPS	Compressed Air		
		Round Carbon	Flat Carbon		Pressure PSI	Flow Rate CFM	Torch & Cable Weight
K-3	Medium duty	5/32" (4mm) to 3/8" (10mm)	3/8" (10mm) 5/8" (16mm)	600	80 (5.6kg/cm ²)	21 (0.60m ³ /min)	4.0 lbs. (1.8kg)
K-5	Extra heavy duty	5/32" (4mm) to 5/8" (16mm)	3/8" (10mm) 5/8" (16mm)	1250	80 (5.6kg/cm ²)	30 (0.85m ³ /min)	6.8 lbs. (3.1kg)

Ordering Information

Model	Torch Only	Torch w/ 7 ft. Cable	Torch w/ 7 ft. Cable & Insulated Hook-Up Kit	Torch w/ 10 ft. Cable	Torch w/ 10 ft. Cable & Insulated Hook-Up Kit
K-3	01-064-003	61-064-016	61-064-012	61-064-017	61-064-013
K-5	01-104-003	61-104-007	N/A	61-104-008	N/A

Sea Torch® Combination Torch

Equipped with 10 ft. (3.05m) cable which can be disconnected from the torch.

- Underwater cutting and welding torch with a one piece body construction.
- Fully insulated electrically for safety in normal operation.
- Bright orange for high visibility to the diver.

Length: 8-3/4"

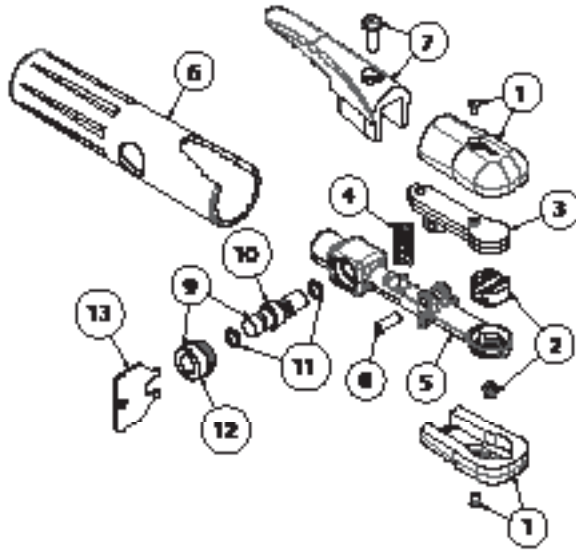
Weight: 4.5 lbs. with cable



Part No.	Description
14-050-124	Sea Torch Complete (5/16" collet chuck)
14-050-126	Sea Torch Complete (3/8" collet chuck)

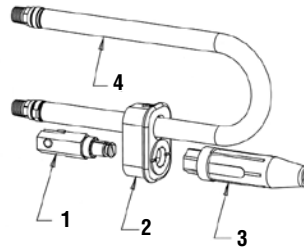
Torch Assembly Replacement Parts

K-3 and K-5 Torch (K-3 Shown)



Item	Description	K-3	K-5
	Complete torch	01-064-003	01-104-003
1	Insulators and screws	94-433-118	94-433-118
2	Head & screw	94-378-368	94-378-370
3	Upper arm	94-048-087	94-048-088
4	Spring	94-800-077	94-800-077
5	Torch body	94-103-114	94-103-114
6	Handle	94-370-079	94-370-079
7	Lever and screw	94-476-034	94-476-034
8	Hinge pin	94-632-094	94-632-094
9	Valve and bonnet assembly	94-104-016	94-104-023
10	Spool and O-rings	94-801-011	94-801-021
11	O-ring	94-710-036	94-710-036
12	Valve bonnet	94-104-012	94-104-012
13	Bonnet wrench	94-960-001	94-960-001

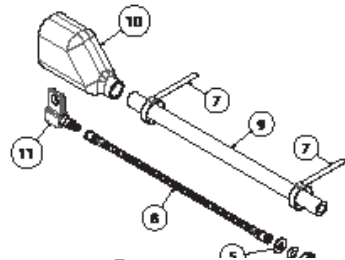
Hook-Up Kit & Parts



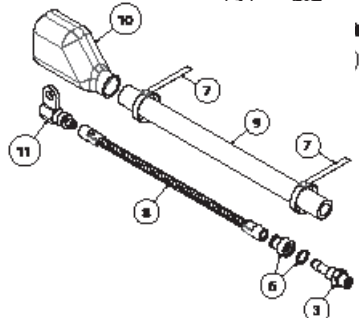
Item	Description	Part No.
	Complete hook-up kit	94-463-045
1	Male gouging connector	94-170-181
2	Cable boot cap	94-105-026
3	4-WPC-R connector	4-WPC-R
4	Pigtail air supply hose	94-396-205

Cable Assembly Replacement Parts

K-3 Cable



K-5 Cable



Item	Description	K-3	K-5
	7' (2.1m) cable assembly	70-088-907	70-128-507
	10' (3m) cable assembly	70-088-910	70-128-510
1	Retainer screw	94-695-054	N/A
2	O-ring	94-710-027	N/A
3	Male connector	94-170-180	94-170-105
4	Spring washer	94-940-104	N/A
5	Brass washer	94-940-103	N/A
6	Swivel sleeve	N/A	94-784-051
7	Clamp (2 required.)	98-167-010	98-167-012
8	7' (2.1m) conductor	96-130-314	96-130-061
8	10' (3m) conductor	96-130-315	N/A
9	7' (2.1m) cover	94-171-273	94-171-004
9	10' (3m) cover	94-171-274	N/A
10	Insulating boot	94-105-014	94-105-017
11	Female connector	94-170-150	94-170-087

Tri-Arc® Foundry Gouging Torch

Tri-Arc® Foundry Gouging Torch

Three torches in one

Designed for foundry applications, defect removal, general purpose applications, and padwashing by just changing head assemblies.

High impact, heat resistant insulators

Provides protection for the torch metal parts.

Forged body

Provides cooler operation, improved air flow and greater current ratings.

Powerful insulated coil spring and high strength upper arm

Insures positive electrode contact at all angles.

Better balance

Streamline design and high strength fluted handles reduce operator fatigue.

Easy cable installation

No need to disassemble the torch, just slide the sleeve from the rear of the handle.

Part No. 02-991-411- Torch only. No heads included.

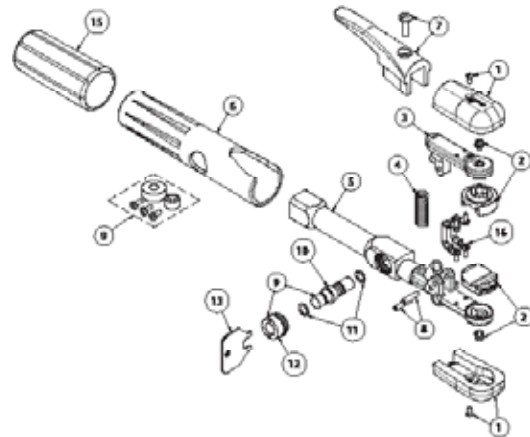
Electrode Size (In./mm)	Air Requirements			
	P.S.I.	KG/CM ²	CFM	L/Min.
5/16" - 1" Round (8.0mm -25.4mm)	80	5.6	33	934

Tri-Arc® Foundry Gouging Torches

Defect Removal		Padwashing		General Purpose	
No Heads in Torch		1/2" (12.7mm) Electrodes		1/2" (12.7mm) Electrodes	
Torch Only w/o Head	02-991-411	Torch Only	02-991-413	Torch Only	02-991-416
Torch & 7ft. (2.1M) Cable	62-991-417	Torch & 7ft. (2.1M) Cable	62-991-419	Torch & 7ft. (2.1M) Cable	62-991-422
		Replacement Heads	94-378-286	Replacement Heads	94-378-267
		5/8" (15.9mm) Electrodes		5/8" (15.9mm) Electrodes	
		Torch Only	02-991-414	Torch Only	02-991-417
		Torch & 7ft. (2.1M) Cable	62-991-420	Torch & 7ft. (2.1M) Cable	62-991-423
		Replacement Heads	94-378-289	Replacement Heads	94-378-270
		3/4" (19.5mm) Electrodes		3/4" (19.5mm) Electrodes	
Torch Only	02-991-425	Torch Only	02-991-415	Torch Only	02-991-418
Torch & 7ft. (2.1M) Cable	62-991-435	Torch & 7ft. (2.1M) Cable	62-991-421	Torch & 7ft. (2.1M) Cable	62-991-424
Defect Removal Head	94-378-298	Replacement Heads	94-378-283	Replacement Heads	94-378-273
				1" (25.4mm) Electrodes	
				Torch Only	02-991-424
				Replacement Heads	94-378-343
				5/8" (15.9mm) Electrodes	
				Torch Only	02-991-428
				3/4" (19.5mm) Electrodes	
				Torch Only	02-991-429

Replacement Parts

Item	Part No.	Description
1	94-433-118	Insulators & screws
2		Head (upper/lower) & screws
	94-378-298	Defect Removal
	94-378-267	General purpose - 1/2" (12.7mm)
	94-378-270	General purpose - 5/8" (15.9mm)
	94-378-273	General purpose - 3/4" (19.5mm)
	94-378-344	General purpose - 1" (25.4mm)
	94-378-286	Padwashing - 1/2" (12.7mm)
	94-378-289	Padwashing - 5/8" (15.9mm)
94-378-283	Padwashing - 3/4" (19.5mm)	
3	94-048-110	Upper arm
4	94-800-088	Spring
5	94-103-221	Torch body
	94-103-237	Torch body without valve
6	94-370-079	Handle
7	94-476-034	Lever & screw
8	94-632-063	Hinge pin
9	94-104-023	Valve & bonnet
	94-123-017	No valve button kit

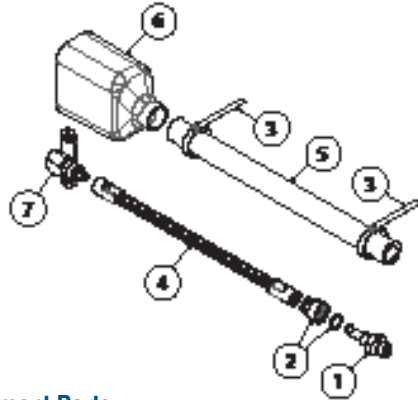


10	94-801-021	Spool & O-rings
11	94-710-036	O-ring
12	94-104-012	Valve bonnet
13	94-960-001	Bonnet wrench
15	94-784-045	Insulating sleeve
16	96-458-018	Jumper (2 required)

Water Cooled Cable Assembly and Concentric Cable Assembly

340° Swivel Concentric Cable Assemblies

These concentric cable assemblies supply both power and air to the Tri-Arc Torch. The 340° swivel gives the operator more freedom to maneuver the torch around the workpiece with less fatigue. It also prevents cable twisting and loosening of connections that could cause cable damage. All cables are ruggedly built to withstand the severe operating conditions present in most heavy-duty gouging environments.

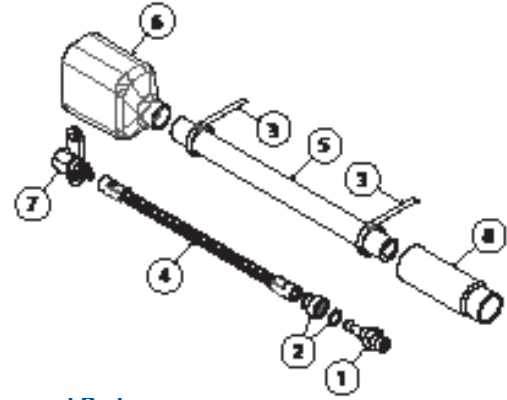


Replacement Parts

Item	Part No.	Description
-	74-143-607	7 ft. cable assembly
-	74-143-610	10 ft. cable assembly
1	94-170-169	Male connector assembly
2	94-784-050	Swivel sleeve
3	98-167-010	Clamp (2 required)
4	96-130-063	7 ft. conductor assembly
	96-130-126	10 ft. conductor assembly
5	96-171-006	7 ft. cable hose cover
	96-171-140	10 ft. cable hose cover
6	94-105-007	Insulating boot
7	94-170-095	Female connector assembly

Extra Heavy Duty Cable Assembly

Use with the Tri-Arc Torch when current requirements exceeds 1600 AMPs. The Cable Assembly was designed to operate at a maximum current setting of 2200 AMPs. This cable is only available in a 7 foot length.

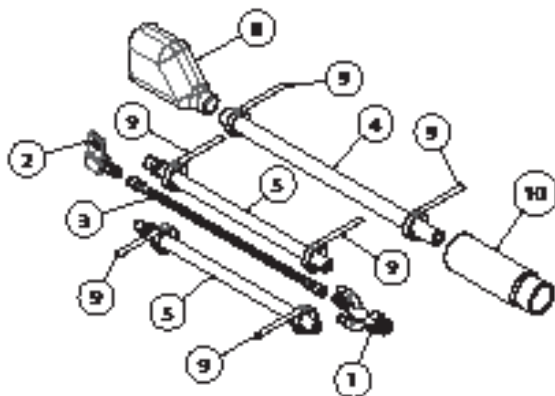


Replacement Parts

Item	Part No.	Description
-	74-161-907	Extra heavy duty cable
1	94-170-176	Male connector assembly
2	94-784-078	Swivel sleeve
3	98-167-012	Band-it clamp (2 required)
4	94-130-286	7 ft. cable conductor assembly
5	96-171-284	7 ft. cable hose cover
6	94-105-028	Insulating boot
7	94-170-174	Female conductor assembly
8	94-105-029	Insulating sleeve

Water-Cooled Cable Assembly

The water cooled cable was designed for heavy-duty gouging or continuous use with the Tri-Arc Torch. The cable design allows water to flow around the copper conductor causing a cooling effect. This prevents the conductor from overheating and melting the cable cover. The separate air line is attached to the male connector to supply air to the torch.



Replacement Parts

Item	Part No.	Description
-	74-085-207	7 ft. water cooled assembly
-	74-085-210	10 ft. water cooled assembly
1	94-170-171	Male connector assembly
2	94-170-150	Female connector assembly
3	96-130-309	7 ft. conductor assembly
	96-130-310	10 ft. conductor assembly
4	94-171-273	7 ft. cable cover
	94-171-274	10 ft. cable cover
5	94-171-298	7 ft. low pressure hose
	94-171-299	10 ft. low pressure hose
8	94-105-014	Insulating boot
9	98-167-010	Clamp (6 required)
10	94-105-029	Insulating sleeve

SLICE® Torch and Striker

SLICE® Torch and Striker

The SLICE® Torch feeds oxygen and electrical power to a specially designed SLICE® Exothermic Cutting Rod. You supply oxygen and either a 12-volt battery or a welding power supply. Either way, after turning on the oxygen and touching the carbon steel cutting rod to the grounded workpiece or a striker plate, the cutting rod ignites immediately. The SLICE® Torch is sold complete, ready to connect to a welding power supply or battery and an oxygen tank.

Safety features such as a protective hand guard and spark arrestor are built into each SLICE® Torch. The torch (Part No. 03-003-000) comes with a 10 ft. (3.0 m) power cable and oxygen hose. It is also available with a Cam-lok connector (Part No. 03-003-001 and 03-003-006) to make twist lock connections with available packages.

Part No.	Description
03-003-000	Slice® torch assembly (#1 cable)
03-003-001	Slice® torch assembly (#6 cable)
03-003-006	Slice® torch assembly (#10 cable)
03-003-008	Slice® torch assembly (Pigtail cable)
72-012-002	Striker assembly

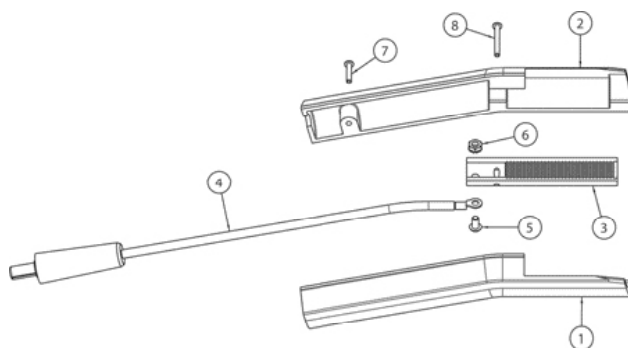


Replacement Parts

Item	Part No.	Description
1	94-370-166	Handle - Right Half
2	94-370-167	Handle - Left Half
3	94-777-109	Shield
4	94-168-022	1/4" Collet Nut assembly
	94-168-024	3/8" Collet nut assembly
5	94-158-048	1/4" Collet chuck
	94-158-045	3/8" Collet chuck
6	94-940-109	Washer
7	94-305-009	Flashback arrestor
8	94-378-338	Head/body assembly
9	94-476-082	Lever assembly
10	94-396-193	Oxygen Hose - 10ft. (3M)
11	96-130-279	Cable assembly for SLICE Torch Part No. 03-003-000
	96-130-276	Cable assembly (Utility & Industrial Pack)
	96-130-319	Cable assembly (Battery & Complete Pack)
12	94-168-023	Extension - 6" (15.24cm)
13	94-940-108	Washer
14	94-777-111	Extension Shield
15	94-463-032	3/8" Conversion Kit
16		10-32 Pan Head Screw
17		6-32 x 9/16" pan Head Screw

An optional SLICE® Striker (Catalog No. 72-012-002) may be purchased to provide a convenient surface for igniting the rod with a 12-volt battery instead of a welding power supply.

Note: All SLICE® torches come standard with the 1/4" Collet Chuck and Collet Nut. This includes all torches in any SLICE® Pack. To utilize the 3/8" rods the user must order the 3/8" rod conversion kit which includes the 3/8" Collet Chuck and Collet Nut.



Replacement Parts

Item	Part No.	Description
1	94-370-168	Handle - Right Half
2	94-370-169	Handle - Left Half
3	96-070-031	Striker Bar
4	96-130-320	Cable Assembly
5	NA	#10-32 x 3/8" Pan Head Screw
6	NA	#10-32 hex nut
7	NA	#6-32 x 1-1/4" Pan Head Screw
8	NA	#6-32 x 3/4" Pan Head Screw

SLICE® Exothermic Cutting Rods

SLICE® exothermic cutting rods are designed specifically for use with SLICE® cutting systems. Their unique one piece patented construction maintains the balance necessary to sustain the exothermic reaction. Once the oxygen flow is started and the rod is ignited, it will continue to burn without electrical power, as long as oxygen flow is maintained. The following is a list of the SLICE® cutting rods available.

Description	Part No.	
	Flux Coated	Uncoated
1/4" x 22" (7 x 559mm)		
25 pcs.	42-049-002	43-049-002
100 pcs.	42-049-003	43-049-003
1/4" x 44" (7 x 1118mm)		
25 pcs.	N/A	43-049-005
3/8" x 18" (10 x 457mm)		
50 pcs.	42-049-005	43-049-007
3/8" x 36" (10 x 914mm)		
25 pcs.	N/A	43-049-009

SLICE® Torches and Packs

SLICE® Exothermic Cutting Systems

Unlike any other cutting process used today, the Arcair® Slice® systems can cut, burn or pierce virtually any metallic, non-metallic or composite material. Our Slice® exothermic torch cuts right through hard-to-cut materials such as mild, stainless and alloy steels, cast iron, aluminum, magnesium and other non-ferrous metals, slag and refractory materials, and concrete or brick. Even if it's caked with rust, mud or other corrosion, Slice® will cut through anything. There's never been a more versatile cutting tool!

The SLICE® Utility Pack

The Slice® Utility Pack permits you to use the exothermic cutting process to cut virtually any metallic, non-metallic or composite material. The package has the basic items needed to do a cutting job packed in a rugged tool box. Just supply oxygen along with an ignition source and you are ready to cut.



Part No.	Description
63-991-026	Slice® utility pack
03-003-001	Torch assembly
72-012-002	Striker assembly
94-134-049	Tool box
94-168-023	Collet extension assembly
94-777-111	Extension shield
96-168-035	Clamp (red)
96-168-036	Clamp (black)

Industrial SLICE® Pack

The Industrial Slice® Pack provides the versatility of exothermic cutting and accommodates a larger oxygen cylinder to extend your cutting time. The industrial cart is capable of carrying a 9" (229 mm) diameter cylinder. The Industrial Slice® Pack includes Slice® torch and striker assemblies with 10 ft./3.0m oxygen hose and power cables.



Part No.	Description
63-991-021	Slice® industrial pack
0799-1607	Oxygen regulator
03-003-001	Torch assembly
72-012-002	Striker assembly
43-049-002	1/4" cutting rods (qty 25)
94-168-023	Collet extension assembly
94-777-111	Extension shield
96-168-035	Clamp assembly (red)
96-168-036	Clamp assembly (black)

SLICE® Battery Pack

The SLICE® Battery Pack comes in a rugged tool box. As with the Utility Pack, you get all the basic items needed to do a cutting job such as torch, striker and rods. Also included in the Battery Pack is a 12-Volt rechargeable SLICE® Battery Box Assembly.



Part No.	Description
63-991-003	SLICE® battery pack, 120 VAC/60HZ
94-991-007	SLICE® battery pack, 220 VAC/50HZ
43-049-002	1/4" Cutting rods (qty 25)
96-076-021	Battery box assembly
94-134-047	Tool box
72-012-002	Striker assembly
03-003-006	Torch assembly
94-168-023	Collet extension assembly
94-777-111	Extension shield
96-130-297	Charging cable, 120 VAC/60HZ
96-130-296	Charging cable, 220 VAC/50HZ

SLICE® Equipment Product Line Parts List

Description	Utility Pack	Battery Pack		Industrial Pack
		120 VAC	220 VAC	
Accessories				
3/8" Conversion kit	94-463-032	94-463-032	94-463-032	94-463-032
3/8" Collet chuck	94-158-045	94-158-045	94-158-045	94-158-045
Harness Assembly				
10' Cable/hose extension	96-130-294	96-130-294	96-130-294	96-130-294
O ₂ regulator assembly	0799-1607	0799-1607	0799-1607	0799-1607
Extension/shield assembly	94-287-013	94-287-013	94-287-013	94-287-013
Repair Parts				
Replacement battery only		96-076-018	96-076-018	
Battery box assembly		96-076-022	96-076-023	