

# Sander & Planer

## Tools & Accessories

**1295DVS**

Variable Speed  
Random Orbit Sander

**Editors' Choice  
Best Overall and  
Editors' Choice  
Best Value**

*Taunton's  
Tool Guide 2007*



### Section Guide

#### Tools

Belt Sanders.....	140
Orbital Sanders .....	140-141
Random Orbit Sanders .....	142-143
Planers .....	144

#### Accessories

Sander Accessories .....	145
Planer Accessories .....	145
Sanding & Polishing Pads & Belts .....	146-150



**BOSCH**

## 1274DVS

3" x 21" Variable-Speed Belt Sander



### Features

- 6.6 Amps, 550-1,100 SFPM - For fine finishing or fast stock removal
- Variable speed dial - Allows matching of speed to workpiece and task
- Lightweight - Designed for both vertical and horizontal applications, great for remodeling work
- 16-ft. cord for extended range of operation
- Removable front handle - For close work
- Compact in-line design - For better balance
- Sands flush to vertical surfaces - For sanding versatility
- Lever belt release-action - For quick belt changes
- Belt tracking adjustment knob
- Graphite platen protector pad - For cool running and uniform sanding
- Replaceable wear inserts - Protect housing from damage
- Accepts optional sanding frame, stand and fence - For versatility and accuracy

### Specifications

Rating	120V AC
Amperage	6.6
Belt Size (in.)	3" x 21"
No Load SFPM	550 - 1,100
Length (in.)	13.8"
Weight (lbs.)	7.25

### Includes

Dust Bag Assembly ..... 2 605 411 023  
 Graphite Platen Pad..... 2 601 098 037  
 Sanding Belt..... Included



## 1276D

4" x 24" Belt Sander

### 1276DVS

4" x 24" Variable-Speed Belt Sander (shown)



### Features

- 12.5 Amps, 1,550 SFPM
- Rugged design - Specifically built for production sanding jobs, as well as jobsite applications
- Magnesium transmission housing reduces tool weight
- Adjustable front handle - Folds away for close work
- Exclusive adjustable dust intake port - Allows use of non-woven belts up to 8mm thick
- Sands flush to vertical surfaces - For sanding versatility
- Lever-action belt release - For quick belt changes
- Belt tracking adjustment knob
- Steel platen protector pad
- Replaceable wear inserts - Protects housing from damage
- Accepts optional sanding frame, stand and fence - For added versatility and accuracy

### 1276DVS also features

- Variable-speed dial - Allows matching of speed to workpiece and task

### Specifications

	1276D	1276DVS
Rating	120V AC	120V AC
Amperage	12.5	12.5
Belt Size (in.)	4" x 24"	4" x 24"
No Load SFPM	1,550	1,150-1,550
Length (in.)	13.8"	13.8"
Weight (lbs.)	13.5	13.5

### Includes

Dust Bag Assembly ..... SA1050  
 Sanding Belt..... Included  
 Steel Platen Pad ..... 2 610 908 625

### Optional Equipment

Graphite Platen Pad..... 3 601 010 509



## 1297DK

1/4 Sheet Orbital Finishing Sander Kit with SheetLoc™

**SheetLoc™**



Carrying Bag Included

### Features

- 2.0 Amp Motor, 12,000 OPM - Ensures fast, smooth results on all surfaces
- SheetLoc™ Sandpaper Attachment System - Pulls regular sandpaper flat and tight. - Giving it the benefits of adhesive "stick-on" paper — fast and easy installation; efficient, uniform sanding, and longer paper life, but without stick-on paper's nearly twice-the-price cost.
- Rubberized paper clamps - For firm, no-slip grip
- Also accepts stick-on paper.
- Bosch Microfilter Dust Canister with integrated paper filter - Optimal filtering system of fine dust
- Flush sanding ability - Sands close to vertical surfaces on three sides
- 3-point counterbalance - Low vibration for maximum comfort.
- Dust-sealed rocker switch - Convenient, easy off and on, keeps dust out
- Ergonomic, soft grip top - For comfort and control

### Specifications

Rating	120V
Amperage	2.0
No Load OPM	12,000
Paper Size	
Regular Sandpaper:	
(4-1/2" x 5-1/2" - Std. 1/4 sheet)	
Stick-On (PSA) Sandpaper:	
(4-1/2" x 4-1/2" - Std. 1/4 Sheet)	
Pad Size	4-1/2" x 4" (1/4 Sheet)
Orbit Diameter (in.)	1/16"
Length (in.)	10"
Height (in.)	5-3/4"
Width	4-1/2"
Weight (lbs.)	2.7

### Includes

Paper Punchplate..... 2 610 920 650  
 Sandpaper Sheet ..... Included  
 Microfilter Dust Canister.....RS024  
 1/4-Sheet Sanding Pad..... 2 610 920 628  
 Versatile Carrying Bag..... 2 610 922 842



## Specifications

Rating	120V
Amperage	3.2
No Load OPM	13,000
Paper Size	4-1/2" x 11" (1/2 sheet)
Orbit Diameter (in.)	3/16"
Length (in.)	17"
Height (in.)	7-5/8"
Weight (lbs.)	6.3
Width	4-1/2"

## Includes

Allen Key	1 907 950 006
Paper Punchplate	2 608 190 017
Microfilter Dust Canister	RS026
Sanding Sheet	Included
1/2-Sheet Sanding Pad	Included



## Features

- 3.2 Amps, 11,000 OPM - Ensures fast, smooth results on all surfaces
- Rubberized paper clamps - For firm, no-slip grip of regular sand paper
- Also accepts stick-on paper
- Dual-row bearing design - For exceptional smoothness
- Bosch Microfilter Dust Canister with integrated paper filter - Optimal filtering system of fine dust
- Ergonomic handles, tapered soft-grip top - Multiple grip positions provide comfort and control. Front handle removes easily for sanding in tight spots
- Flush sanding ability - Sands close to vertical surfaces on three sides
- Trigger switch with lock-on button

## 1293D

1/2-Sheet Orbital Finishing Sander



## Specifications

Rating	120V AC
Amperage	2.3
No Load OPM	13,000-19,000
Sanding Plate Size (in.)	3-3/4"
Orbit Diameter (in.)	3/32" (2mm)
Length (in.)	11"
Weight (lbs.)	2.4

## Includes

Sanding Sheets (20)	Included
Polishing Pad	CS015
Extension Pad	2 608 000 200
Narrow Extension (Oval)	2 608 000 198
Narrow Extensions (Flat)	2 608 000 199
Regular Plate	2 608 000 174
Carrying Case	Included



## Features

- 2.3 Amps, 13,000-19,000 OPM - Ensures fast, smooth results on all surfaces
- Uniform sanding in corners and tight spaces
- True orbital finishing sander motion, not inferior arcing or pivoting motion
- Tool-free pad changes - Makes pad changes quick and hassle-free
- Low-vibration design - Engineered for smooth running and operator comfort
- Ergonomic soft-grip top - Designed for comfort
- 3-position pad - Extends paper and pad life
- Built-in dust port - For attaching vacuum hose
- Passive dust collection system - Vacuum cleaner and hose required. Accepts Bosch VAC001, VAC009 and VAC010 vacuum hoses or VAC002 hose adapter.

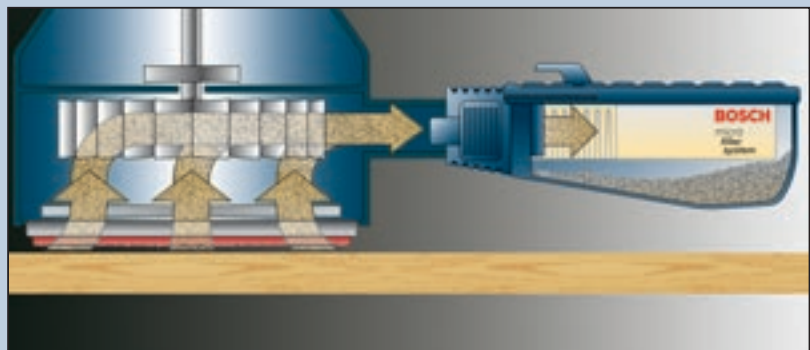
## 1294VSK

Corner/Detail Orbital Sander Kit



Carrying Case Included

## Breathe Easy with **BOSCH**



All Bosch orbital and random orbit sanders feature through-the-pad dust extraction to pull dust away from the work surface to maximize sanding efficiency and to extend paper and disc life. The revolutionary Bosch Microfilter system with its integrated paper filter, captures the highest volume of all size dust particles, providing reduced exposure to dust. This filtration system collects up to 120% more dust than other leading brands and traps dust particles as small as 1/2 micron. The durable canister is easy to empty and clean.

## 1295D 5" Palm Random Orbit Sander/Polisher

**1295DVS(K)** 5" Palm-Grip Variable Speed Random Orbit Sander/Polisher (shown)



### Features

- Multi-purpose sander with pad that both orbits and rotates, duplicating natural hand sanding action and delivering a smooth, well-blended surface finish.
- 2.0 Amps, 12,000 OPM speed ensures fast, smooth results on all surfaces
- Enhanced random orbit sanding action - Uses a 1/8" diameter eccentric orbit (1/16" offset) plus free rotation to provide a fine, swirl-free finish faster or aggressive stock removal.
- High-performance Microcellular Backing Pad - Conforms to contours, provides a fine finish
- Integral pad dampening system - Helps prevent swirl marks for consistent fine finish
- Bosch Microfilter Dust Canister with integrated paper filter - Optimal system for filtering fine dust
- Dust Sealed Switch - For long life
- Ergonomic Soft-grip top - For comfort and control
- Ergonomic motor housing - For alternate, side grip position
- Uses 8-hole 5" Hook and Loop Sanding Discs - Uses readily available, industry-standard discs

### 1295DVS also features

- 2.2 Amps, 7,000-12,000 OPM speed range - Ensures fast, smooth results on all surfaces
- Variable speed dial - Allows match of speed to workpiece and task

### Specifications

	1295D	1295DVS
Rating	120V	120V
Amperage	2.0	2.2
No Load OPM	12,000	7,000-12,000
Eccentric Offset	1/16" (1.5mm)	1/16" (1.5mm)
Disc Size	5"	5"
Length (in.)	10"	10"
Height (in.)	5"	5"
Weight (lbs.)	3.5	3.5
Width	5"	5"

### Includes

#### 1295D/1295DVS

Soft Backing Pad .....RS031  
 Pad Wrench; 5mm Hex ..... 1 907 950 006  
 Sanding Disc.....Included  
 Microfilter Dust Canister.....RS025

#### 1295DVS(K)

Includes all of the above plus  
 Carrying Case ..... 2 610 914 120



See pages 145-147, 150 for sander accessories.

## 3107DVS

5" Variable-Speed Random Orbit Sander/Polisher



### Features

- Multi-purpose sander with pad that both orbits and rotates, duplicating natural hand sanding action and delivering a smooth, well-blended surface finish
- Enhanced random orbit sanding action - Eccentric orbit diameter of 3/16" (3/32" offset) plus free rotation for fast, swirl-free fine finishing or for aggressive stock removal.
- Powerful 3.3 Amps with variable-speed dial, (4,500-13,000 OPM) to match speed to workpiece and task
- High-performance soft Microcellular Backing Pad - Conforms to contours, provides a fine finish
- Integral Pad Dampening System - Helps prevent swirl marks for consistent fine finish
- Bosch Microfilter Dust Canister with integrated paper filter - Optimal system for filtering fine dust
- Multi-position Front Handle Design - Easily folds up or detaches for sanding in tight spots
- Trigger with lock-on button
- Uses 8-Hole 5" Hook and Loop Sanding Discs - Compatible with industry-standard discs

### Specifications

Rating	120V
Amperage	3.3
No Load OPM	4,500-13,000
Eccentric Offset	3/32" (2.5mm)
Disc Size	5" (125mm)
Length (in.)	10-1/4"
Height (in.)	7-5/8"
Weight (lbs.)	5.0
Width	5"

### Includes

Pad Wrench; 5mm Hex ..... 1 907 950 006  
 Soft Backing Pad .....RS031  
 Microfilter Dust Canister.....RS026  
 Sanding Disc.....Included



See pages 145-147, 150 for sander accessories.

# Random Orbit Sanders

## Specifications

	3725DEVS	3727DEVS
Rating	120V	120V
Amperage	3.3	3.3
No Load OPM	4,500-12,000	4,500-12,000
Eccentric Offset	3/32" (2.5mm)	5/64" (2mm)
Disc Size	5" (125mm)	6" (150mm)
Length (in.)	12"	12"
Height (in.)	5.25"	5.25"
Weight (lbs.)	5.1	5.2
Width	5"	6"

## Includes

Pad Wrench 5mm Hex ..... 1 907 950 006  
 Microfilter Dust Canister.....RS026  
 Sanding Disc.....Included

### 3725DEVS

5" Soft Backing Pad.....RS031

### 3727DEVS

6" Soft Backing Pad.....RS6045



See pages 145-147, 150 for sander accessories.

## Features

- Multi-purpose sander with pad that both orbits and rotates, duplicating natural hand sanding action and delivering a smooth, well-blended surface finish
- Enhanced random orbit sanding action - Eccentric orbit diameter of 3/16" (3/32" offset) plus free rotation for fast, swirl-free fine finishing or for aggressive stock removal
- Powerful 3.3 Amps with variable-speed dial, (4,500-12,000 OPM) to match speed to workpiece and task
- Soft-Start - Reduces start-up torque
- Constant Response™ Circuitry - Maintains constant speed under load, provides overload protection
- High-performance Microcellular Backing Pad - Conforms to contours, provides a fine finish
- Integral Pad Dampening System - Helps prevent swirl marks for consistent fine finish
- Rugged Die-cast Aluminum Gear Housing with exclusive dual-bearing pad mount - Long-life design eliminates wobble and vibration
- Bosch Microfilter Dust Canister with integrated paper filter - Optimal system for filtering fine dust
- Tapered Soft-Grip Top, plus ergonomic handles
- Multiple grip positions prevent fatigue for comfort and control - Front handle removes easily for sanding in tight spots
- Trigger with lock-on button
- Uses 8-Hole 5" Hook and Loop Discs - Compatible with industry-standard discs

### 3727DEVS also features

- Uses 6-Hole 6" Hook and Loop Discs - Uses industry-standard 6" discs
- Eccentric orbit diameter of 5/32" (5/64" offset)

## 3725DEVS 5" Electronic Variable-Speed Random Orbit Sander/Polisher

**3727DEVS** 6" Electronic Variable-Speed Random Orbit Sander/Polisher (shown)



## Specifications

Rating	120V
Amperage	6.5
No Load OPM	3,100-6,650
No Load RPM (in Turbo mode)	270-600
Eccentric Offset	3/32" (2.5mm)
Disc Size	6" (150mm)
Length (in.)	12"
Height (in.)	6"
Weight (lbs.)	5.3
Width	6"

## Includes

Dust Tube ..... 2 601 328 072  
 Soft Backing Pad.....RS6045  
 Ambidextrous Auxiliary Handle ..... 2 602 025 067  
 Pad Wrench, 5mm (stored on tool) ..... 1 907 950 006  
 Sanding Disc.....Included



See pages 146-147, 150 for sander accessories.

## Features

- Multiple-purpose sander with two sanding modes: Random orbit mode for normal stock removal or fine finishing and "Turbo" driven eccentric orbit mode for aggressive stock removal at 5x random orbit sander removal rate!
- Mode selector switch - Quickly change between random orbit mode and "Turbo" mode
- Powerful 6.5 Amps with variable-speed dial (3,100-6,650 OPM) - To match speed to workpiece and task
- Soft-Start - Reduces start-up torque
- Constant Response™ Circuitry - Maintains pad speed under heavy loads and protects against overloads
- High-performance Microcellular Backing Pad - Conforms to contours, provides a fine finish
- Integral pad dampening system - Helps prevent swirl marks for consistent fine finish
- Rugged Die-cast Aluminum Gear Housing with exclusive dual-bearing pad mount - Long-life design eliminates wobble and vibration
- Tapered Soft-Grip Top, plus ergonomic handles
- Passive dust collection system - Vacuum cleaner and hose required - accepts Bosch VAC001, VAC009 and VAC010 hoses or VAC002 hose adapter
- Uses 6-Hole 6" hook and loop discs - Compatible with industry-standard discs

## 1250DEVS

6" Dual-Mode Electronic Random Orbit Sander/Polisher



## 3365

3-1/4" Planer



### Features

- Powerful 5 Amp Motor, 18,000 RPM - For fast stock removal and a smooth finish
- Electronically-Counterbalanced Single-Blade System automatically positions blade at ideal cutting angle - Reduces drag and provides fast operation and smooth finish. Eliminates uneven planing caused by misaligned blades.
- Equipped with Bosch Woodrazor® micrograin carbide blades, which resist fractures from nail and staple strikes. - Last up to 2 times longer on 3365 than standard carbide blades on other planers.
- Ratcheting Depth Knob - Allows fool-proof setting of depth increments from 0" to 5/64" (2.0mm) within one revolution. No need to re-zero the depth.
- Chip Ejection Switch - Directs shavings left or right
- Edge Guide Fence - Ensures consistent planing through entire workpiece. Has a protective shield that covers the section of blade not in use
- Park Rest Stand - Protects blade and workpiece
- Lock-off Release Button - Helps avoid accidental starts

### Specifications

Rating	120V AC
Amperage	5.0
No Load RPM	18,000
Planing Depth	0 - 5/64" (2.0mm)
Rabbeting Depth (in.)	0 - 5/16"
Maximum Planing Width (in.)	0" to 3-1/4"
Shoe Length (in.)	10-3/4"
Cord Length (ft.)	10'
Weight (lbs.)	5

### Includes

Woodrazor® Blades (2)	PA1202
Chip Bag	2 605 411 035
Guide Fence	PA1203
Blade Wrench	1 907 950 003



See page 145 for planer accessories.

## 1594K

3-1/4" Planer with Carrying Case



Carrying Case Included

### Features

- Powerful 6.5 Amp motor, 16,500 RPM - For fast stock removal and a smooth finish
- Versatile 2-blade system equipped with Bosch Woodrazor® micrograin carbide blades - Woodrazors last up to 30% longer than standard carbide blades and resist fractures from nail and staple strikes
- Ratcheting Depth Knob - Allows fool-proof setting of depth increments from 0" to 3/32" (2.6mm) within one revolution. No need to re-zero the depth.
- Chip Ejection Switch - Directs shavings left or right
- Bevel Guide Fence - Ensures consistent planing from 0° to 45° through entire workpiece. A protective shield covers the section of blade not in use.
- Spring-Loaded Park Rest Stand - Protects blade and workpiece; special shape allows easy start-up in middle of workpiece
- Ambidextrous Lock-off Release Button - Helps avoid accidental starts
- Can be converted for use with large high-speed steel blades (optional accessories required).

### Specifications

Rating	120V AC
Amperage	6.5
No Load RPM	16,500
Planing Depth	0 - 3/32" (2.6mm)
Rabbeting Depth (in.)	0 - 5/16"
Maximum Planing Width (in.)	0" to 3-1/4"
Shoe Length (in.)	11 - 1/8"
Cord Length (ft.)	10'
Weight (lbs.)	6

### Includes

Woodrazor® Blades (2)	PA1202
Chip Bag	2 605 411 035
Bevel Guide Fence	2 607 001 077
Blade Wrench	1 907 950 025
Carrying Case	2 610 906 281



See page 145 for planer accessories.

# Sander/Planer Attachments

## Sander Attachments

### 2 608 005 057 Sanding Frame

- Raises sander, reducing sanding pressure
- Adds depth control to belt sander
- Helps prevent gouging of workpiece
- Allows use of belt sander's linear motion for fine finishing
- Fits models 1276D, 1276DVS



### 1 608 932 026 Sanding Stand

- Turns your portable belt sander into a stationary sander
- Professional accessory eliminates makeshift solutions
- Use only in conjunction with Sanding Fence 1 608 932 046 (sold separately)
- Fits models 1276D, 1276DVS



### 1 608 932 046 Sanding Fence

- Use with sanding stand to shape stock held against belt
- Fences can be mounted alongside belt or across sander
- Use without stand to guide sander on edges
- Fits model 1276D, 1276DVS



### RS024 Microfilter Dust Canister

- The optimal on-tool system for collecting fine dust
- Integrated paper filter traps particles as small as a 1/2 micron in diameter
- Easy to empty and clean
- Fits model 1297D



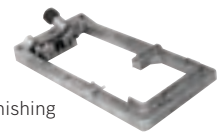
### RS025 Microfilter Dust Canister

- The optimal on-tool system for collecting fine dust
- Integrated paper filter traps particles as small as a 1/2 micron in diameter
- Easy to empty and clean
- Fits models 1295D, 1295DH, 1295DP, 1295DVS



### SA1051 Sanding Frame

- Raises sander, reducing sanding pressure
- Adds depth control to belt sander
- Helps prevent gouging of workpiece
- Allows use of belt sander's linear motion for fine finishing
- Fits model 1274DVS



### 1 608 030 024 Sanding Stand

- Turns your portable belt sander into a stationary sander
- Professional accessory eliminates makeshift solutions
- Clamps sander in horizontal or vertical position
- Use only in conjunction with Sanding Fence 2607001079 (sold separately)
- Fits model 1274DVS



### 2 607 001 079 Sanding Fence

- Use with sanding stand to shape stock held against belt
- Fences can be mounted alongside belt or across sander
- Use without stand to guide sander on edges
- Fits model 1274DVS



### RS006 Hose Adapter for Various Sanders

- Used on Vacuum Hose VAC001, VAC005, VAC006, VAC007, VAC008, VAC009, VAC010, VAC021 or Vacuum Hose Adapter VAC002
- Fits models 1293D, 1295D, 1295DH, 1295DP, 1295DVS, 1297D, 3107DVS, 3725DVS, 3727DVS, 3725DEVS, 3727DEVS



### RS026 Microfilter Dust Canister

- The optimal on-tool system for collecting fine dust
- Integrated paper filter traps particles as small as a 1/2 micron in diameter
- Easy to empty and clean
- Fits models 3107DVS, 3725DVS, 3727DVS, 3725DEVS, 3727DEVS, 1293D



## Planer Attachments

### PA1202 Woodrazor® Micrograin Carbide Planer Blades

- Toughest, most durable planer blade available
- Lasts up to 30% longer than standard tungsten carbide blades
- 10% sharper than standard carbide blades
- Double-edged, reversible
- Made with micrograin tungsten carbide



### PA1204 HSS Blades with Retainers

- For use with 1594 Planer
- Factory leveled for immediate installation on planer
- Resharpenable
- Bosch PA1206 Blade leveling fixture is required for installation and reinstallation after resharpening



### PA1205 High-Speed Steel Blades

- For use with 1594 Planer and many competitors' models
- Resharpenable
- HSS blade retainers required
- Bosch PA1206 Blade leveling fixture is required for installation and reinstallation after resharpening



### 2 607 001 077 Bevel Guide Fence

- Allows bevel cutting from 0°-45°
- Two lock knobs and cast bracket for rigidity
- Ensures consistent planing through entire workpiece
- Protective shield covers section of blade not in use



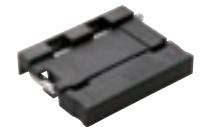
### PA1203 Guide Fence

- Ensures consistent planing through entire workpiece
- Protective shield covers section of blade not in use



### PA1206 HSS Blade Leveling Fixture

- For use with 1594 Planer
- Required for installation of new and resharpened PA1205 HSS blades



### Rabbeting Depth Stops for Planers

- 2 607 000 073 Fits models 3365, 53514, 53518
- 1 608 132 006 Fits model 1594



### 2 605 411 035 Chip Bag

- Extra-large chip bag keeps work area clean



### 2 610 906 281 Metal Case

- For use with Bosch Planers



## Sanding Color Coding Guide



### Premium resin bonded aluminum oxide

- Long lasting performance.
- Best for sanding wood, wood composites and other materials.



### Stearate coating over double resin bonded aluminum oxide

- Resists clogging for fast / efficient sanding.
- Best for sanding painted, finished or soft surfaces.



### Double resin bonded, closed coat aluminum oxide

- Flexible cloth backing.
- Durable / resists tearing.
- Best for sanding metal and other hard surfaces.

### Grit Guide

<b>40</b>	Heavy sanding and stripping
<b>60, 80</b>	Moderate sanding and smoothing
<b>100, 120</b>	Light sanding and cleaning
<b>180</b>	Fine sanding/before first coat
<b>240</b>	Very fine sanding/before finish coat
<b>320</b>	Sanding between finish coats

## Sanding Discs for Random Orbit Sanders

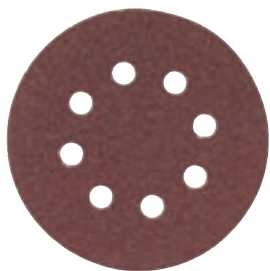


### Sanding Discs for Paint

Ideal for paint and finish removal or sanding softer materials. Features a special non-stick coating designed to eliminate the dust that often clogs other sandpapers rendering them ineffective. Lasts up to 4X longer than standard sandpaper.

- Superior performance and long life
- Cleanly pre-punched with 6 or 8 holes for uniform dust extraction through the pad without creating unwanted swirl marks or scratches on the work surface
- Available in 5" or 6" discs with hook & loop backing

Item #	Diameter	Grit	Description	Quantity
SR5W000	5"	60-120-240	Hook & loop, 8 holes	6
SR5W040	5"	40	Hook & loop, 8 holes	5
SR5W042	5"	40	Hook & loop, 8 holes	25
SR5W045	5"	40	Hook & loop, 8 holes	50
SR5W060	5"	60	Hook & loop, 8 holes	5
SR5W062	5"	60	Hook & loop, 8 holes	25
SR5W065	5"	60	Hook & loop, 8 holes	50
SR5W080	5"	80	Hook & loop, 8 holes	5
SR5W082	5"	80	Hook & loop, 8 holes	25
SR5W085	5"	80	Hook & loop, 8 holes	50
SR5W120	5"	120	Hook & loop, 8 holes	5
SR5W122	5"	120	Hook & loop, 8 holes	25
SR5W125	5"	120	Hook & loop, 8 holes	50
SR5W180	5"	180	Hook & loop, 8 holes	5
SR5W182	5"	180	Hook & loop, 8 holes	25
SR5W185	5"	180	Hook & loop, 8 holes	50
SR5W240	5"	240	Hook & loop, 8 holes	5
SR5W242	5"	240	Hook & loop, 8 holes	25
SR5W245	5"	240	Hook & loop, 8 holes	50
SR6W000	6"	60-120-240	Hook & loop, 6 holes	6
SR6W040	6"	40	Hook & loop, 6 holes	5
SR6W042	6"	40	Hook & loop, 6 holes	25
SR6W060	6"	60	Hook & loop, 6 holes	5
SR6W062	6"	60	Hook & loop, 6 holes	25
SR6W080	6"	80	Hook & loop, 6 holes	5
SR6W082	6"	80	Hook & loop, 6 holes	25
SR6W120	6"	120	Hook & loop, 6 holes	5
SR6W122	6"	120	Hook & loop, 6 holes	25
SR6W180	6"	180	Hook & loop, 6 holes	5
SR6W182	6"	180	Hook & loop, 6 holes	25



## Sanding Discs for Wood

Perfect for multi-purpose sanding projects and hard woods such as oak and maple or building boards like plywood. Industrial strength, this paper provides users with the highest quality aluminum oxide grit and resin bonding agent.

- Superior performance and long life
- Bosch sanding discs are cleanly pre-punched with 6 or 8 holes for uniform dust extraction through the pad without creating unwanted swirl marks or scratches on the work surface
- Available in 5" or 6" discs with hook & loop backing

Item #	Diameter	Grit	Description	Quantity
SR5R000	5"	60-120-240	Hook & loop, 8 holes	6
SR5R040	5"	40	Hook & loop, 8 holes	5
SR5R042	5"	40	Hook & loop, 8 holes	25
SR5R045	5"	40	Hook & loop, 8 holes	50
SR5R060	5"	60	Hook & loop, 8 holes	5
SR5R062	5"	60	Hook & loop, 8 holes	25
SR5R065	5"	60	Hook & loop, 8 holes	50
SR5R080	5"	80	Hook & loop, 8 holes	5
SR5R082	5"	80	Hook & loop, 8 holes	25
SR5R085	5"	80	Hook & loop, 8 holes	50
SR5R105	5"	100	Hook & loop, 8 holes	50
SR5R120	5"	120	Hook & loop, 8 holes	5
SR5R122	5"	120	Hook & loop, 8 holes	25
SR5R125	5"	120	Hook & loop, 8 holes	50
SR5R180	5"	180	Hook & loop, 8 holes	5
SR5R182	5"	180	Hook & loop, 8 holes	25
SR5R185	5"	180	Hook & loop, 8 holes	50
SR5R240	5"	240	Hook & loop, 8 holes	5
SR5R242	5"	240	Hook & loop, 8 holes	25
SR5R245	5"	240	Hook & loop, 8 holes	50
SR5R320	5"	320	Hook & loop, 8 holes	5
SR5R322	5"	320	Hook & loop, 8 holes	25
SR5R325	5"	320	Hook & loop, 8 holes	50
SR6R000	6"	60-120-240	Hook & loop, 6 holes	6
SR6R040	6"	40	Hook & loop, 6 holes	5
SR6R042	6"	40	Hook & loop, 6 holes	25
SR6R060	6"	60	Hook & loop, 6 holes	5
SR6R062	6"	60	Hook & loop, 6 holes	25
SR6R080	6"	80	Hook & loop, 6 holes	5
SR6R082	6"	80	Hook & loop, 6 holes	25
SR6R102	6"	100	Hook & loop, 6 holes	25
SR6R120	6"	120	Hook & loop, 6 holes	5
SR6R122	6"	120	Hook & loop, 6 holes	25
SR6R180	6"	180	Hook & loop, 6 holes	5
SR6R182	6"	180	Hook & loop, 6 holes	25
SR6R240	6"	240	Hook & loop, 6 holes	5
SR6R242	6"	240	Hook & loop, 6 holes	25
SR6R320	6"	320	Hook & loop, 6 holes	5
SR6R322	6"	320	Hook & loop, 6 holes	25



RS511

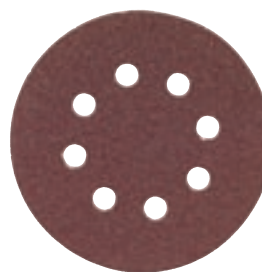


RSM15

## Special Application Sanding Discs

- Scotch-Brite™ surface conditioning pads are ideal for surface conditioning of wood, plastic and solid surface material
- Use microfinishing film discs for solid surface material finishing for unmatched finishing when compared to conventional paper products

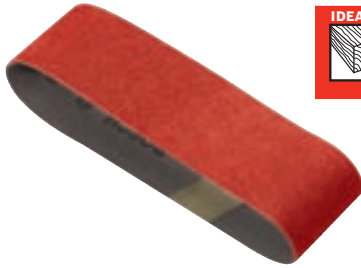
Item #	Diameter	Grit	Description	Quantity
RS511	5"	Coarse	Scotch-Brite™ surface conditioning abrasive pad	10
RS521	5"	Medium	Scotch-Brite™ surface conditioning abrasive pad	10
RS581	5"	Fine	Scotch-Brite™ surface conditioning abrasive pad	10
RS2101	6"	Coarse	Scotch-Brite™ surface conditioning abrasive pad	10
RS2281	6"	Medium	Scotch-Brite™ surface conditioning abrasive pad	10
RS2801	6"	Fine	Scotch-Brite™ surface conditioning abrasive pad	10
RS2280	6"	Medium	Abrasive mesh disc	5
RSM10	5"	100 microns	Microfinishing film disc	25
RSM60	5"	60 microns	Microfinishing film disc	25
RSM30	5"	30 microns	Microfinishing film disc	25
RSM15	5"	15 microns	Microfinishing film disc	25
RSM110	6"	100 microns	Microfinishing film disc	25
RSM160	6"	60 microns	Microfinishing film disc	25
RSM130	6"	30 microns	Microfinishing film disc	25
RSM115	6"	15 microns	Microfinishing film disc	25



## PSA (Self-adhesive) Sanding Discs

Item #	Diameter	Grit	Description	Quantity
RSP060	5"	60	PSA general purpose sanding disc	25
RSP080	5"	80	PSA general purpose sanding disc	25
RSP120	5"	120	PSA general purpose sanding disc	25
RSP240	5"	240	PSA general purpose sanding disc	25

## Sanding Belts



Bi-directional sanding belts feature butt-splice construction for smooth running in both directions.

- Designed for superior performance on wood, metal, plastic, fiberglass and other materials
- Open coat aluminum oxide abrasive resists loading for high removal rates and a great finish
- Double resin bonding and x-weight cloth provide durability and longer belt life

Item #	Size	Grit	Quantity
SCBR000	1-1/2" x 12"	Assorted	3
SCBR040	1-1/2" x 12"	40	3
SCBR041	1-1/2" x 12"	40	10
SCBR060	1-1/2" x 12"	60	3
SCBR061	1-1/2" x 12"	60	10
SCBR080	1-1/2" x 12"	80	3
SCBR081	1-1/2" x 12"	80	10
SCBR120	1-1/2" x 12"	120	3
SCBR121	1-1/2" x 12"	120	10
SCBR180	1-1/2" x 12"	180	3
SCBR240	1-1/2" x 12"	240	3
SB3R000	3" x 18"	Assorted	3
SB3R040	3" x 18"	40	3
SB3R041	3" x 18"	40	10
SB3R060	3" x 18"	60	3
SB3R061	3" x 18"	60	10
SB3R080	3" x 18"	80	3
SB3R081	3" x 18"	80	10
SB3R100	3" x 18"	100	3
SB3R101	3" x 18"	100	10
SB3R120	3" x 18"	120	3
SB3R121	3" x 18"	120	10
SB4R000	3" x 21"	Assorted	3
SB4R040	3" x 21"	40	3
SB4R041	3" x 21"	40	10
SB4R060	3" x 21"	60	3
SB4R061	3" x 21"	60	10
SB4R080	3" x 21"	80	3
SB4R081	3" x 21"	80	10
SB4R100	3" x 21"	100	3
SB4R101	3" x 21"	100	10
SB4R120	3" x 21"	120	3
SB4R121	3" x 21"	120	10
SB5R000	3" x 24"	Assorted	3
SB5R040	3" x 24"	40	3
SB5R041	3" x 24"	40	10
SB5R060	3" x 24"	60	3
SB5R061	3" x 24"	60	10
SB5R080	3" x 24"	80	3
SB5R081	3" x 24"	80	10
SB5R100	3" x 24"	100	3
SB5R101	3" x 24"	100	10
SB5R120	3" x 24"	120	3
SB5R121	3" x 24"	120	10
SB6R040	4" x 24"	40	3
SB6R041	4" x 24"	40	10
SB6R060	4" x 24"	60	3
SB6R061	4" x 24"	60	10

## Sanding Belts (Continued)

Item #	Size	Grit	Quantity
SB6R080	4" x 24"	80	3
SB6R081	4" x 24"	80	10
SB6R100	4" x 24"	100	3
SB6R101	4" x 24"	100	10
SB6R120	4" x 24"	120	3
SB6R121	4" x 24"	120	10

## Detail Sanding Sheets for Corner / Detail Sanders



### Detail Sanding Sheets for Paint

Ideal for paint and finish removal or sanding softer materials. Features a special non-stick coating designed to eliminate the dust that often clogs other sandpapers rendering them ineffective. Lasts up to 4X longer than standard sandpaper.

- Premium resin-bonded aluminum oxide open coat with stearate coating
- Front-side punching enhances dust control
- When used with sanders such as the Bosch 1294VSK Corner / Detail Sander Kit, professionals can access corners and edges otherwise difficult to reach

Item #	Grit	Description	Quantity
SDTW000	60-120-240	Assorted grits, hook & loop, 6 holes	6
SDTW040	40	Hook & loop, 6 holes	5
SDTW042	40	Hook & loop, 6 holes	25
SDTW060	60	Hook & loop, 6 holes	5
SDTW062	60	Hook & loop, 6 holes	25
SDTW080	80	Hook & loop, 6 holes	5
SDTW082	80	Hook & loop, 6 holes	25
SDTW120	120	Hook & loop, 6 holes	5
SDTW122	120	Hook & loop, 6 holes	25
SDTW180	180	Hook & loop, 6 holes	5
SDTW182	180	Hook & loop, 6 holes	25
SDTW240	240	Hook & loop, 6 holes	5
SDTW242	240	Hook & loop, 6 holes	25



## Detail Sanding Sheets for Wood

Perfect for multi-purpose sanding projects and hard woods such as oak and maple or building boards like plywood. Industrial strength, this paper provides users with the highest quality aluminum oxide grit and resin bonding agent.

- Premium resin-bonded aluminum oxide open coat
- Front-side punching enhances dust control
- When used with sanders such as the Bosch 1294VSK Corner / Detail Sander Kit, professionals can access corners and edges otherwise difficult to reach

Item #	Grit	Description	Quantity
SDNR000	60-120-240	Assorted grits, hook & loop, narrow	6
SDTR000	60-120-240	Assorted grits, hook & loop, 6 holes	6
SDNR040	40	Hook & loop, narrow	5
SDTR040	40	Hook & loop, 6 holes	5
SDTR042	40	Hook & loop, 6 holes	25
SDNR060	60	Hook & loop, narrow	5
SDTR060	60	Hook & loop, 6 holes	5
SDTR062	60	Hook & loop, 6 holes	25
SDNR080	80	Hook & loop, narrow	5
SDTR080	80	Hook & loop, 6 holes	5
SDTR082	80	Hook & loop, 6 holes	25
SDNR120	120	Hook & loop, narrow	5
SDTR120	120	Hook & loop, 6 holes	5
SDTR122	120	Hook & loop, 6 holes	25
SDTR180	180	Hook & loop, 6 holes	5
SDTR182	180	Hook & loop, 6 holes	25
SDNR240	240	Hook & loop, narrow	5
SDTR240	240	Hook & loop, 6 holes	5
SDTR242	240	Hook & loop, 6 holes	25



## Surface Conditioning Abrasive Triangle Pad

Item #	Description	Quantity
CS101	Coarse for rust, corrosion and finish removal or scuffing	1

## Sanding Sheets for Finishing Sanders



### Sanding Sheets for Paint

Ideal for paint and finish removal or sanding softer materials. Features a special non-stick coating designed to eliminate the dust that often clogs other sandpapers rendering them ineffective. Lasts up to 4X longer than standard sandpaper.

- Premium resin-bonded aluminum oxide open coat with stearate coating
- Ideal for finishing sanders but also other applications, even hand sanding

Item #	Grit	Description	Quantity
SS4W000	4-1/4" x 5-1/2"	60-120-180	6
SS4W060	4-1/4" x 5-1/2"	60	5
SS4W062	4-1/4" x 5-1/2"	60	25
SS4W080	4-1/4" x 5-1/2"	80	5
SS4W082	4-1/4" x 5-1/2"	80	25
SS4W120	4-1/4" x 5-1/2"	120	5
SS4W122	4-1/4" x 5-1/2"	120	25
SS4W180	4-1/4" x 5-1/2"	180	5
SS4W182	4-1/4" x 5-1/2"	180	25
SS1W060	9" x 11"	60	5
SS1W065	9" x 11"	60	Bulk, 50*
SS1W080	9" x 11"	80	5
SS1W085	9" x 11"	80	Bulk, 50*
SS1W120	9" x 11"	120	5
SS1W125	9" x 11"	120	Bulk, 50*
SS1W180	9" x 11"	180	5
SS1W185	9" x 11"	180	Bulk, 50*

\*Bulk sheets are individually UPC bar coded.



## Sanding Sheets for Wood

Perfect for multi-purpose sanding projects and hard woods such as oak and maple or building boards like plywood. Industrial strength, this paper provides users with the highest quality aluminum oxide grit and resin bonding agent.

- Premium resin-bonded aluminum oxide open coat
- Ideal for finishing sanders but also other applications, even hand sanding

Item #	Size	Grit	Quantity
SS4R000	4-1/4" x 5-1/2"	60-120-180	6
SS4R060	4-1/4" x 5-1/2"	60	5
SS4R062	4-1/4" x 5-1/2"	60	25
SS4R080	4-1/4" x 5-1/2"	80	5
SS4R082	4-1/4" x 5-1/2"	80	25
SS4R120	4-1/4" x 5-1/2"	120	5
SS4R122	4-1/4" x 5-1/2"	120	25
SS4R180	4-1/4" x 5-1/2"	180	5
SS4R182	4-1/4" x 5-1/2"	180	25
SS1R060	9" x 11"	60	5
SS1R065	9" x 11"	60	Bulk, 50*
SS1R080	9" x 11"	80	5
SS1R085	9" x 11"	80	Bulk, 50*
SS1R120	9" x 11"	120	5
SS1R125	9" x 11"	120	Bulk, 50*
SS1R180	9" x 11"	180	5
SS1R185	9" x 11"	180	Bulk, 50*

\*Bulk sheets are individually UPC bar coded.



## Sanding Sheets for Metal

Extra strong cotton fabric backing for extra life and perfect for cast iron, stainless steel or even prepping copper pipe for soldering.

- Premium resin-bonded aluminum oxide closed coat
- Ideal for finishing sanders but also other applications, even hand sanding

Item #	Size	Grit	Quantity
SS1B060	9" x 11"	60	5
SS1B065	9" x 11"	60	Bulk, 50*
SS1B080	9" x 11"	80	5
SS1B085	9" x 11"	80	Bulk, 50*
SS1B120	9" x 11"	120	5
SS1B125	9" x 11"	120	Bulk, 50*
SS1B180	9" x 11"	180	5
SS1B185	9" x 11"	180	Bulk, 50*

\*Bulk sheets are individually UPC bar coded.

## Polishing Bonnets & Discs



RS013



RS014

A broad range of polishing and buffing accessories to handle every job. Includes pads, bonnets and buffs in a variety of sizes, pile heights and materials for professional use.

Item #	Diameter	Description	Quantity
RS013	5"	Sponge applicator pad	1
RS014	5"	Buffing pad	1
RS6029	6"	Buffing pad	1
RS6030	6"	Sponge applicator pad	1
RS6031	6"	Hard felt polishing disc for flat surfaces	2
RS6032	6"	Soft felt polishing disc for contoured surfaces	2

## Backing Pads



RS019



RS030

For use with abrasive discs and polishing bonnets on random orbital sanders. The flexible rubber pad allows flat or contour sanding without gouging.

- Available in 5" or 6" diameters with hook & loop attachment

Item #	Diameter	Description
RSP019	5"	8-hole PSA (self-adhesive disc) backing pad (medium)
RS030	5"	8-hole hook & loop backing pad extra-soft
RS031	5"	8-hole hook & loop backing pad soft
RS032	5"	8-hole hook & loop backing pad hard
RS6044	6"	6-hole hook & loop backing pad extra-soft
RS6045	6"	6-hole hook & loop backing pad soft
RS6046	6"	6-hole hook & loop backing pad hard
RS6034*	6"	6-hole hook & loop backing pad medium
2 600 099 005	6"	Adapter for PSA sanding discs (self-adhesive)

\*For use with model 1370DEV5