

NEW PRODUCT

B U L L E T I N



Arcair
CutSkill

SUBJECT: **CS3000 and CS4000 CutSkill® Gouging Torches**

Select from two new designs, the CS4000 or CS3000, each available with flexible, 7' or 10' length hose. Only from Arcair®, the inventor of the original air carbon arc process and the industry leader for 50 years, will you find this superb marriage of proven technology and design. Only Arcair® Gouging torches work efficiently with the natural angles and movements of the arm and wrist. The addition of superb support and complete technical backup makes Arcair® the number one name in air carbon arc manual torches.

The CS3000 and CS4000 are highly efficient metal removal tools for fabrication jobs in steel fabrication plants, shipyards, railroads, farms...anywhere people want to save time and money. They speed up weld removal, backgouging, edge preparation, defect repair and many other metal removal jobs. They are ideal for almost all metals, with little or no deformation, because the heat input is so low. Our two newest additions offer the reliable, rugged design you've come to expect from Arcair®. All that remains is to select your torch.

Features and Benefits

- Two designs; select the one you need
- 7' and 10' cables, available with torch body and separately, for both the CS4000 and CS3000
- Rugged, lasting reliability
- Ideal for most metals
- Speeds up weld removal, backgouging, edge preparation, defect repair, and many other metal removal jobs
- 360° swivel promotes free movement to position the torch, more efficient natural angles, and a more natural movement of the arm and wrist
- Ergonomically designed handle

Guaranteed best.



CS3000 AND CS4000 CUTSKILL® GOUGING TORCHES

Specifications

CS3000

Accepts	
Pointed Carbons	1/8" (3 mm) to 3/8" (10 mm)
Flat Carbons	3/8" (10 mm) & 5/8" (16 mm)
Maximum 600 Amps Compressed Air	
Pressure	80 psi (5.6 kg/cm ²)
Flow Rate	21 cfm (0.23 m ³ /min)
Torch & Cable Weight	4.0 lbs. (1.8 kgs)

CS4000

Accepts	
Pointed Carbons	5/32"(4 mm) to 1/2" (13 mm)
Flat Carbons	3/8" (10 mm) & 5/8" (16 mm)
Maximum 1000 Amps Compressed Air	
Pressure	80 psi (5.6 kg/cm ²)
Flow Rate	28 cfm (0.79 m ³ /min)
Torch & Cable Weight	5.4 lbs. (2.4 kgs)

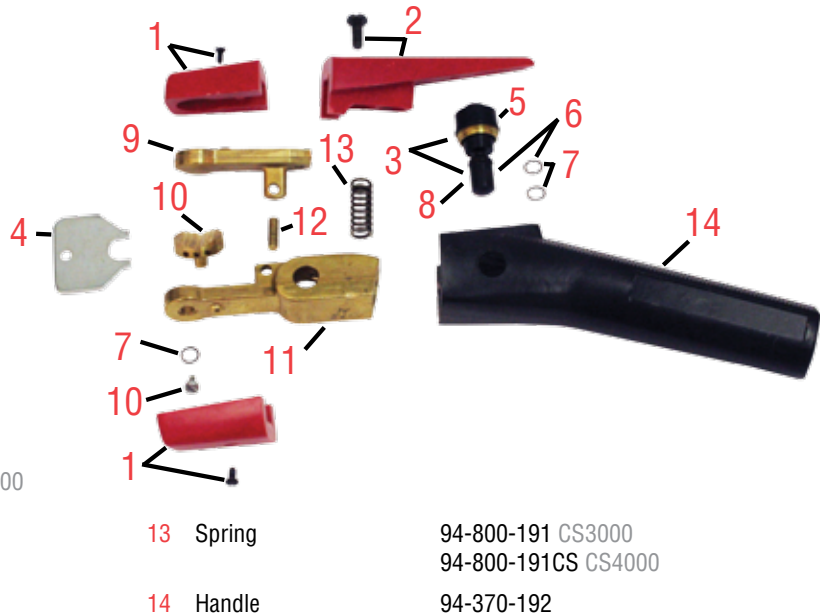
Ordering

Additional information on the Arcair® consumables can be obtained in the full line product catalog, Form No. 64-2103. It can be viewed and downloaded in PDF format from our website: www.thermadyne.com. Or, order this catalog online by using our website literature order form.

	Torch Only	Torch & 7' (2,1 m) Cable	Torch & 10' (3,0 m) Cable	7' (2,1 m) Cable	10' (3,0 m) Cable
CS3000	01066000	61066007	61066010	70066007	70066010
CS4000	01086000	61086007	61086010	70086007	70086010

Replacement Parts

1	Insulators & Screws	94-433-193CS
2	Lever & Screw	94-476-080CS
3	Valve Bonnet & Spool	94-104-016
4	Bonnet Wrench	94-960-001
5	Valve Bonnet Only	94-104-012
6	Spool & O-Rings	94-801-011
7	O-Ring (2)	94-710-036
8	Spool Only	94-801-010
9	Upper Arm	94-048-120 CS3000 94-048-120CS CS4000
10	Head & Screw	94-378-366CS
11	Torch Body	94-103-232
12	Hinge Pin	94-632-101



U.S. Customer Care: 800-426-1888 / FAX 800-535-0557 • International Customer Care: 905-827-9777 / FAX 905-827-9797
www.tweco.com



WORLD HEADQUARTERS: 16052 Swingley Ridge Road, Suite 300 • St. Louis, Missouri 63017 U.S.A.

A Global Cutting & Welding Market Leader™

THE AMERICAS

Denton, TX USA
U.S. Customer Care
 Ph: (1) 800-426-1888
 Fax: (1) 800-535-0557

Miami, FL USA
Sales Office, Latin America
 Ph: (1) 954-727-8371
 Fax: (1) 954-727-8376

Oakville, Ontario, Canada
International Customer Care
 Ph: (1) 905-827-9777
 Fax: (1) 905-827-9797

Rio de Janeiro, Brazil
Customer Care
 Ph: (55) 21-2485-8998
 Fax: (55) 21-2485-8866

EUROPE

Chorley, United Kingdom
Customer Care
 Ph: (44) 1257-261755
 Fax: (44) 1257-224800

Milan, Italy
Sales Office
 Ph: (39) 0236546801
 Fax: (39) 0236546840

ASIA/PACIFIC

Cikarang, Indonesia
Customer Care
 Ph: 62 21+ 8983-0011 / 0012
 Fax: 62 21+ 893-6067

Osaka, Japan
Sales Office
 Ph: 816-4809-8411
 Fax: 816-4809-8412

Melbourne, Australia
Customer Care:
 Ph: 1300-654-674
 Fax: 613+ 9474-7391

International:
 Ph: 613+ 9474-7508
 Fax: 613+ 9474-7488

Rawang, Malaysia
Customer Care
 Ph: 603+ 6092-2988
 Fax: 603+ 6092-1085

Shanghai, China
Sales Office
 Ph: 86 21+ 6280-1273
 Fax: 86 21+ 3226-0955

Singapore
Sales Office
 Ph: 65+ 6832-8066
 Fax: 65+ 6763-5812